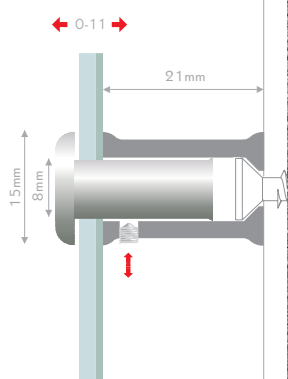




1:1

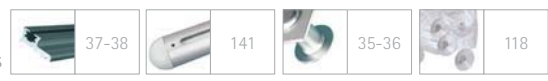
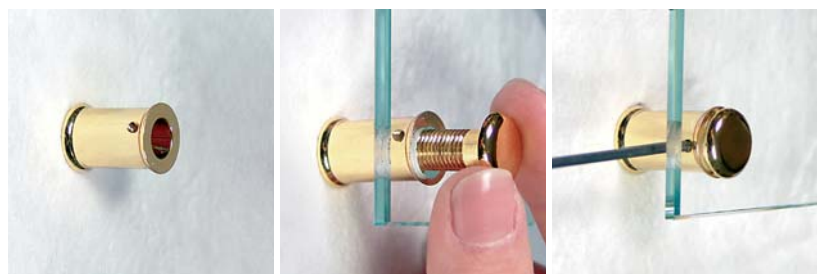


EN plug-interlocksystem for medium sizes. mount the fastener to the wall, put on the panel and plug the head through the panel into the fastener. fix the head in the fastener with the allen screw. for signs, panels and boards with medium size.
mounting: plug-interlocksystem, tamper-proof. material: brass, gold-, silver- or chrome-plated. wall distance: 21mm. sign thickness: max. 11mm.

on the wall



- chrome
F1521CM
- silver
F1521AR
- gold
F1521GD





37 39 41



43-52
steel



53-62
synthetics



63-82
ceiling-
flagsigns



83-100
special



101-114
information
carrier

AMBRA

Fay

JIL SANDER

malo

CIVIDINI

Jean Paul
GAULTIER

BURBERRY
LONDON

PRADA



fisso



109-113



114